

ROAD COMMISSION FOR MONTCALM COUNTY

2018-2019 CERTIFIED ROAD MILEAGE

FERRIS TOWNSHIP

PRIMARY TOTAL = 18.00 MILES

PAVED = 18.00

GRAVEL = 0.00

LOCAL TOTAL = 58.99 MILES

PAVED = 16.07 MILES

GRAVEL = 42.92 MILES

TOWNSHIP MAP

FERRIS TOWNSHIP

SHEET 63

SECTION MAPS

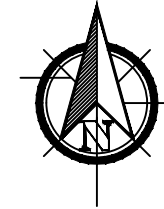
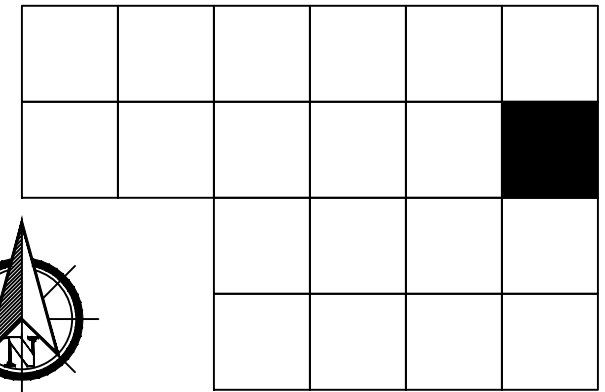
LAKE STEVEN – SECTION 26

SHEET 64

LAKE STEVEN – SECTION 27

SHEET 65

MONTCALM COUNTY FERRIS TOWNSHIP



T 11 N : R 05 W



ONE INCH EQUALS 4000 FEET

- COUNTY LINE -----
- TOWNSHIP LINE - - - - -
- SECTION LINE - - - - -
- CORPORATE LIMITS —————
- URBAN BOUNDARY ~~~~~
- STATE TRUNK LINE ████████
- COUNTY PRIMARY ▬▬▬▬
- COUNTY LOCAL ▬▬▬▬
- ADJACENT COUNTY | | | | |
- CITY OR VILLAGE STREET —————
- FRED MEIJER HEARTLAND TRAIL ████████

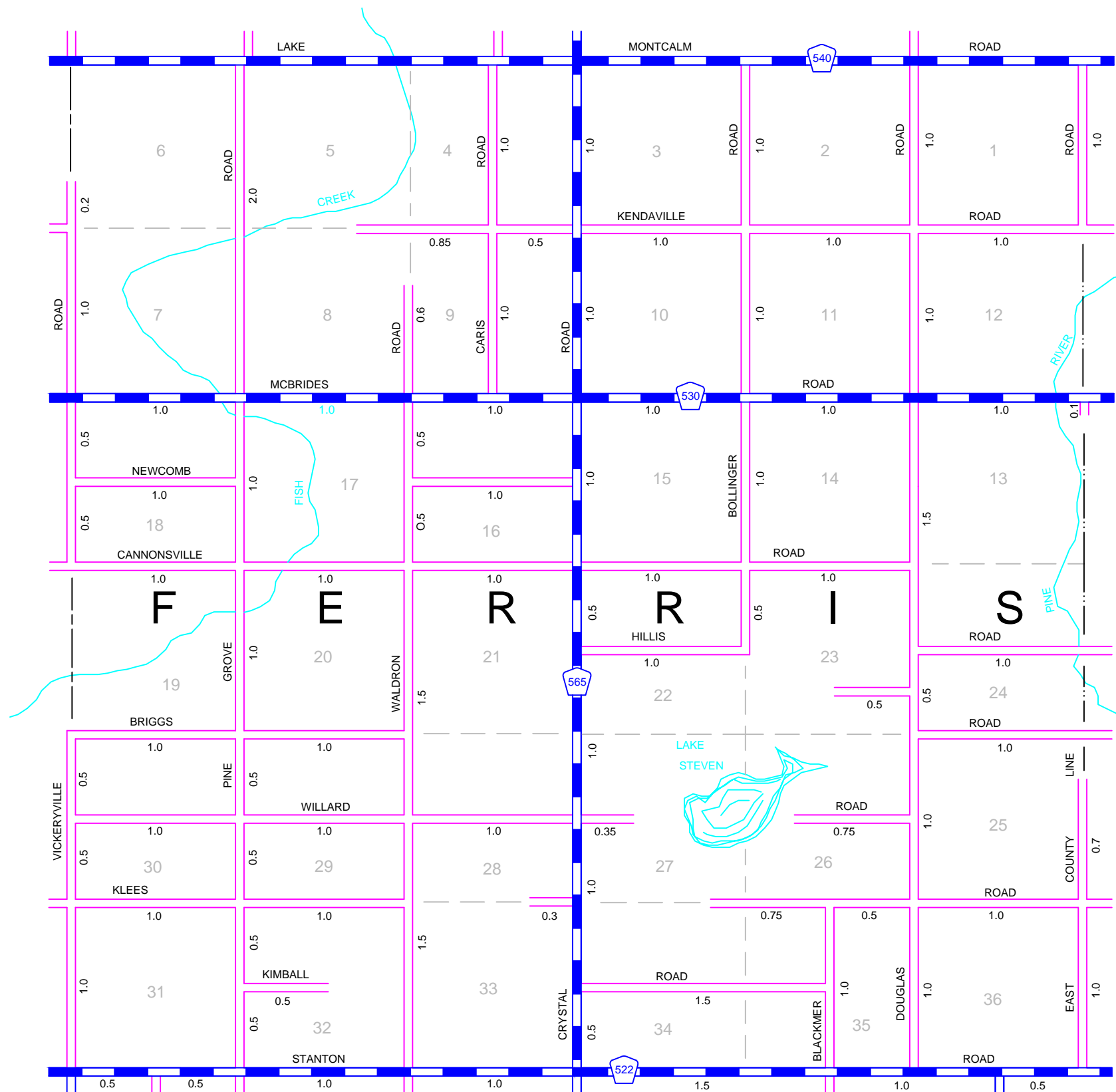
CERTIFIED MILLAGE

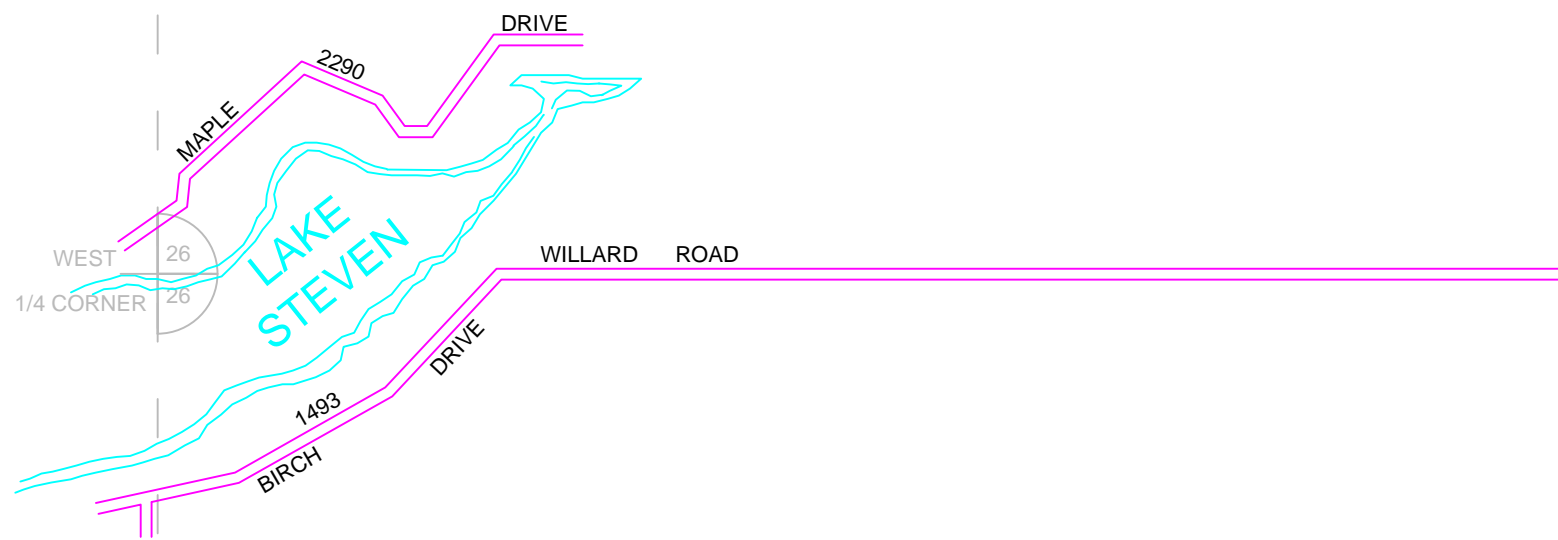
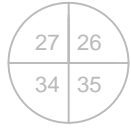
PRIMARY ROAD SYSTEM IS 18.00 MILES

LOCAL ROAD SYSTEM IS 57.60 MILES

Prepared by

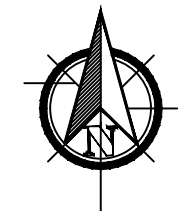
ROAD COMMISSION FOR MONTCALM COUNTY





LAKE STEVEN

**MONTCALM COUNTY
FERRIS TOWNSHIP
SECTION 26**



6	5	4	3	2	1
7	8	9	10	11	12
18	17	16	15	14	13
19	20	21	22	23	24
30	29	28	27	26	25
31	32	33	34	35	36

T 11 N : R 05 W

- COUNTY LINE
- TOWNSHIP LINE
- SECTION LINE
- CORPORATE LIMITS
- URBAN BOUNDARY
- STATE TRUNK LINE
- COUNTY PRIMARY
- COUNTY LOCAL
- ADJACENT COUNTY
- CITY OR VILLAGE STREET
- FRED MEIJER HEARTLAND TRAIL

CERTIFIED MILLAGE

LOCAL ROAD SYSTEM
TOTAL FEET IS 3783
EQUALS 0.72 MILES

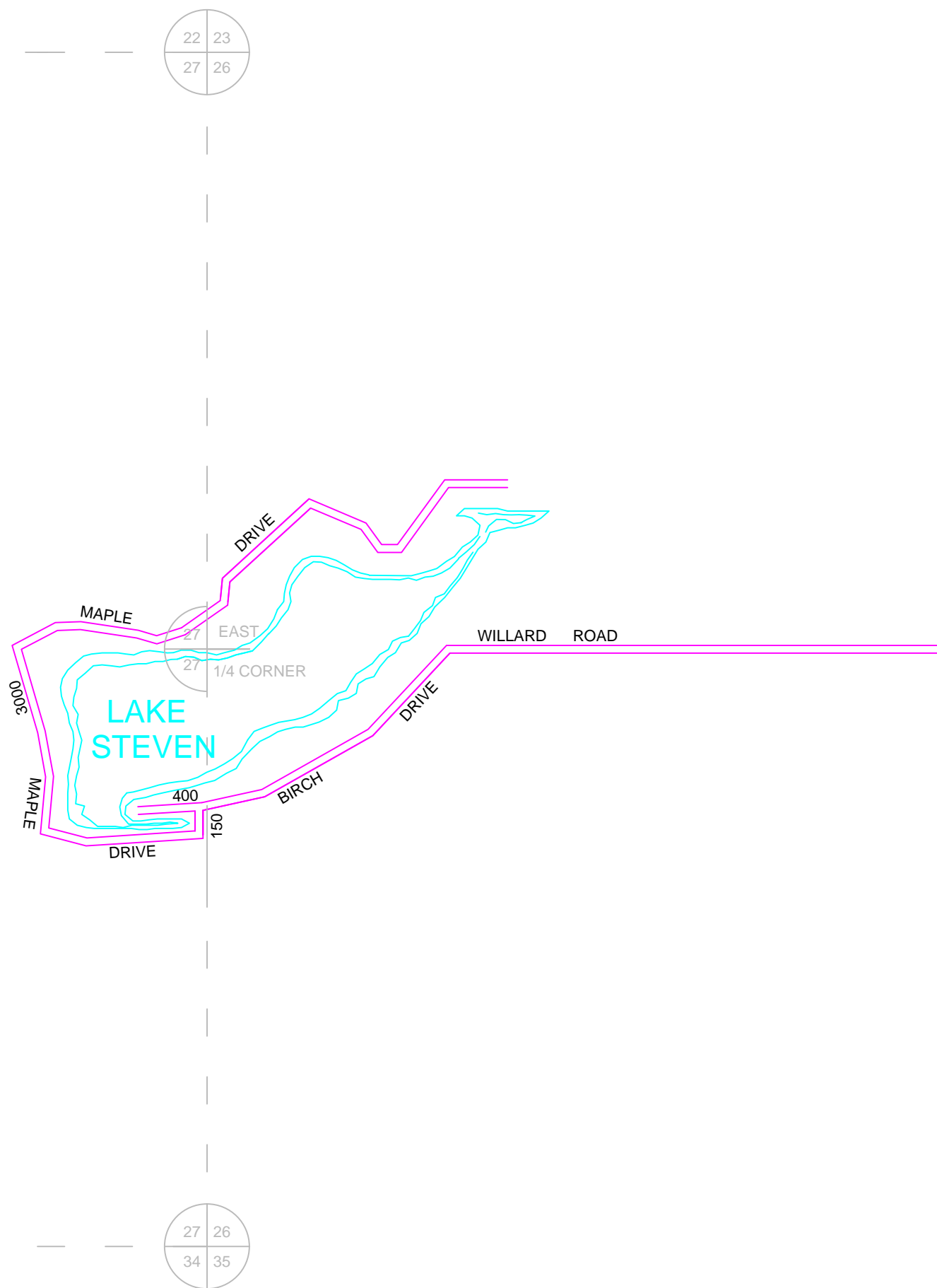
Prepared by
ROAD COMMISSION FOR MONTCALM COUNTY

MONTCALM COUNTY FERRIS TOWNSHIP SECTION 27



6	5	4	3	2	1
7	8	9	10	11	12
18	17	16	15	14	13
19	20	21	22	23	24
30	29	28	27	26	25
31	32	33	34	35	36

T 11 N : R 05 W



- COUNTY LINE
- TOWNSHIP LINE
- SECTION LINE
- CORPORATE LIMITS
- URBAN BOUNDARY
- STATE TRUNK LINE
- COUNTY PRIMARY
- COUNTY LOCAL
- ADJACENT COUNTY
- CITY OR VILLAGE STREET
- FRED MEIJER HEARTLAND TRAIL

CERTIFIED MILLAGE

LOCAL ROAD SYSTEM
TOTAL FEET IS 3550
EQUALS 0.67 MILES

Prepared by
ROAD COMMISSION FOR MONTCALM COUNTY

LAKE STEVEN